



## **Summitview School - 2024 - 2025 School Supply Package Information**

Summitview School is continuing to offer school supply packages through **Write-On Stationery**. We will purchase, package and deliver all of your children's school supplies for the next year. As part of our service, **we also provide pre-printed labels**.

You are able to see the items and quantities requested by the teachers but also customize your order to select just the items that you require. Orders can be submitted on our website until August 10<sup>th</sup>, 2024 and will be delivered to the school at the end of August.

### **TO SUBMIT YOUR ORDER ONLINE:**

- Go to [www.write-on.ca](http://www.write-on.ca)
- Click on "PARENTS - Order Here"
- School Name: **Summitview School - GRANDE CACHE**
- Choose your grade and place your order.
- Complete your order by clicking 'PLACE ORDER'
- You will receive an automatic email confirmation to confirm your order has been received
- **We now accept VISA, MC, AMEX, Visa Debit and Interac On-line.**

If you have any questions, please contact us directly at:  
**Phone: (780) 486-4169**      **email: [marhea@write-on.ca](mailto:marhea@write-on.ca)**  
**Fax 1-866-604-3246**      **website: [www.write-on.ca](http://www.write-on.ca)**



**WRITE-ON STATIONERY**

Phone: (780) 486-4169 • Toll Free: 1 (866) 486-4169  
Fax: 1 (866) 604-3246 • Email: marhea@write-on.ca

**Online Ordering! Credit Card/Interac Online**  
[www.write-on.ca](http://www.write-on.ca)

**Summitview School - GRANDE CACHE (Grade 7)**

Please submit online orders by: **August 1, 2024**  
Delivery: **Orders will be delivered to the school at the end of August.**

**ALL SCHOOL FEES ARE TO BE PAID ONLINE**  
NEW STUDENT Lock - \$7.00

**Required Items**

All items listed below are required.

	<b>Qty Required</b>	
<b>3</b> Hilroy Lined Looseleaf (200 sheets)	<b>3</b>	\$4.28 each x _____ = \$ _____
<b>8</b> Index Dividers (pkg of 5)	<b>8</b>	\$1.40 each x _____ = \$ _____
<b>2</b> Graph Looseleaf 4 x 1" (50 sheets)	<b>2</b>	\$5.02 each x _____ = \$ _____
<b>10</b> Duotang(s) (assorted colours)	<b>10</b>	\$0.75 each x _____ = \$ _____
<b>2</b> Hilroy 140 Page Coil Scribbler	<b>2</b>	\$2.97 each x _____ = \$ _____
<b>60</b> HB Pencils (pre-sharpened)	<b>60</b>	\$0.28 each x _____ = \$ _____
<b>5</b> BIC Pen (Red)	<b>5</b>	\$0.31 each x _____ = \$ _____
<b>12</b> BIC Pen (Blue)	<b>12</b>	\$0.31 each x _____ = \$ _____
<b>1</b> Crayola 12 Pencil Crayons (pre-sharpened)	<b>1</b>	\$4.84 each x _____ = \$ _____
<b>2</b> White Eraser - Dixon (large)	<b>2</b>	\$0.53 each x _____ = \$ _____
<b>1</b> 40g Glue Stick	<b>1</b>	\$1.95 each x _____ = \$ _____
<b>1</b> Pencil Case(s)	<b>1</b>	\$6.49 each x _____ = \$ _____
<b>1</b> Fiskars Pointed Scissors (7")	<b>1</b>	\$4.22 each x _____ = \$ _____
<b>1</b> Staedtler Pencil Sharpener with Lid (2 Holes)	<b>1</b>	\$3.26 each x _____ = \$ _____
<b>1</b> 30 cm Clear Plastic Ruler (cm/mm)	<b>1</b>	\$1.75 each x _____ = \$ _____
<b>1</b> Scientific Calculator - Texas Instruments TI30xa	<b>1</b>	\$20.76 each x _____ = \$ _____
<b>1</b> Larousse French/English Dictionary	<b>1</b>	\$15.86 each x _____ = \$ _____
<b>1</b> Staedtler Excellence Geometry Set	<b>1</b>	\$6.63 each x _____ = \$ _____
<b>1</b> Earbud Headphones for Computer Use	<b>1</b>	\$6.49 each x _____ = \$ _____
<b>3</b> Facial Tissue (126 sheets)	<b>3</b>	\$2.55 each x _____ = \$ _____
<b>4</b> 2" O Ring Binders	<b>4</b>	\$7.46 each x _____ = \$ _____
<b>1</b> 1" O Ring Binders	<b>1</b>	\$4.53 each x _____ = \$ _____
<b>1</b> Gel Hand Sanitizer (236 ml)	<b>1</b>	\$7.94 each x _____ = \$ _____
<b>3</b> Disinfectant Wipes	<b>3</b>	\$5.83 each x _____ = \$ _____
<b>1</b> Water Bottle (spill proof) - TO BE BROUGHT FROM HOME	<b>1</b>	\$0.00 each x _____ = \$ _____
<b>1</b> Chromebook - RECOMMENDED (please see the GYPSD BYOD Pamphlet included)	<b>1</b>	\$0.00 each x _____ = \$ _____

**\*\*\* This is a suggested supply list. Parents and students may adjust accordingly \*\*\***



bring  
your own  
device



Dear Parent/Guardian,

Research indicates that using technology in the school setting results in students who are more active, engaged and more likely to take pride and ownership in their learning. Regular technology use will increase self-advocacy skills including seeking assistance, conducting research, problem solving, and communication. Student confidence will grow as they rely less on the teacher and more on their own initiative for knowledge-creation.

We at BCOM Computer Centre are proud to have been chosen to partner with GYPSD to provide quality chromebooks at a reasonable price to the students within the Grand Yellowhead School Division.

To help you in this process we have put together an easy to navigate website or come visit us in our retail store.

BCOM's Educational Portal can be found at: [www.b-com.ca/education/](http://www.b-com.ca/education/)

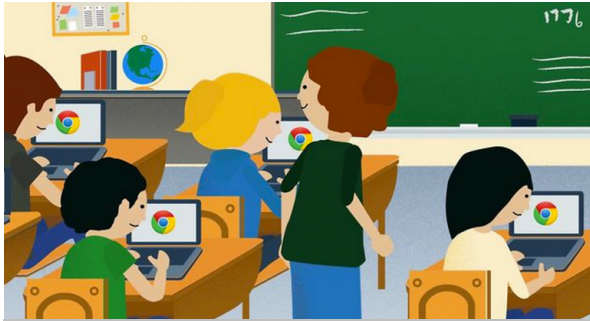
This portal is exclusive to Grande Yellowhead Public School Division. Please click on **REGISTER** where you will be prompted to enter your email address, activation code (**gypsdbcom**) and a password of your choice.

You may also visit us at:

**BCOM Computer Centre**  
15051-118 Ave NW  
Edmonton, AB T5V 1H9  
780.485.8800



# Why Chromebooks?



Research indicates that using technology in the school setting results in students who are more active, engaged and more likely to take pride and ownership in their learning. Effective technology use will increase self-advocacy skills including seeking assistance, conducting research, problem solving, and communication. Student confidence will grow as they rely less on the teacher and more on their own initiative for knowledge and content-creation.

Creating content for a larger audience provides students with an authentic purpose; they will be motivated to edit, revise and produce a higher quality of work. Through the students' use of digital tools, the focus of activity will shift from teachers to students. Inquiry-based, student-directed methods will replace lecture-based methods. Learners will be more active as they solve problems, answer questions, brainstorm, work in teams, debate, and formulate questions of their own. Interactive tools, digital resources, and creation/production tools will enable deeper study. Teachers will be better able to modify, extend and individualize digital content based on student need.

## Purchasing Option

Grande Yellowhead Public School Division has arranged a purchasing portal through BCOM Computer Centre Inc.

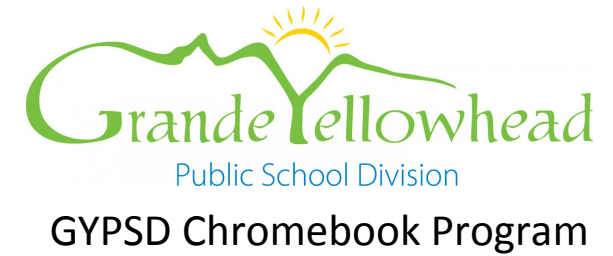
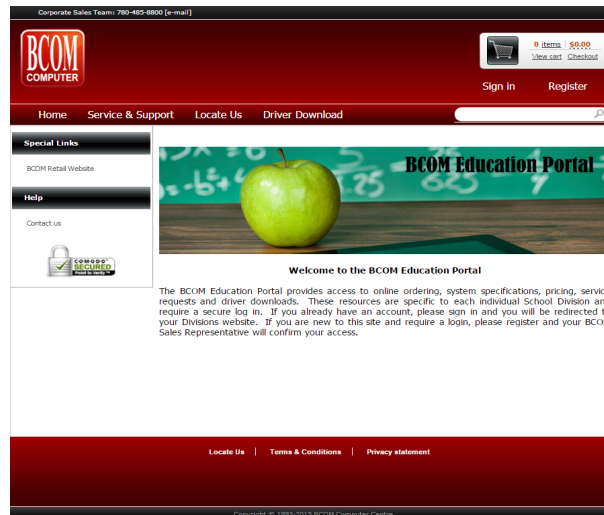


## Purchasing Portal

This portal is exclusive to Grande Yellowhead Public School Division. Please click on REGISTER where you will be prompted to enter your email address, activation code (gypsdbcom) and a password of your choice.

BCOM's Educational Portal can be found at:

[www.b-com.ca/education/](http://www.b-com.ca/education/)



## Lenovo 100e Chromebook 2nd Gen MTK



### Processor

MediaTek MT8173C (4C, 2x A72 @ 2.1GHz + 2x A53 @1.7GHz)

### Graphics

Integrated PowerVR GX6250

### Memory

4GB Soldered

### Display

11.6" HD (1366x768)

### Storage

32GB eMMC

### WLAN + Bluetooth

11ac, 2x2 + BT4.1

### Color

Black

### Camera

720p

### Keyboard

Non-backlit

### Battery

42Wh

### Power Adapter

45W USB-C

### Operating System

Chrome OS

### Warranty

1-year, carry-in

# \$239.95

(plus \$1.20 ERA ADS Fee and GST)

## Lenovo 300e Chromebook Flip Design



### Processor

MediaTek MT8173C (4C, 2x A72 @ 2.1GHz + 2x A53 @1.7GHz)

### Graphics

Integrated PowerVR GX6250

### Memory

4GB Soldered

### Display

11.6" HD (1366x768)

### Storage

32GB eMMC

### WLAN + Bluetooth

11ac, 2x2 + BT4.1

### Color

Black

### Camera

720p

### Keyboard

Non-backlit

### Battery

42Wh

### Power Adapter

45W USB-C

### Operating System

Chrome OS

### Warranty

1-year, carry-in

# \$319.95

(plus \$1.20 ERA ADS Fee and GST)

## Lenovo 14e Chromebook



### Processor

AMD A4-9120C (2C, 1.6 / 2.4GHz, 1MB)

### Graphics

Integrated AMD Radeon R4

### Memory

4GB Soldered

### Display

14" FHD (1920x1080)

### Storage

32GB eMMC

### WLAN + Bluetooth

11ac, 2x2 + BT4.2

### Color

Mineral Grey

### Camera

720p

### Keyboard

Non-backlit

### Battery

57Wh

### Power Adapter

45W USB-C

### Operating System

Chrome OS

### Warranty

1-year, carry-in

# \$339.95

(plus \$1.20 ERA ADS Fee and GST)